



ELECTRONIC COPY

LABORATORY GROWN DIAMOND REPORT

August 1, 2022	
IGI Report Number	LG539227804
Description	LABORATORY GROWN DIAMOND
Shape and Cutting Style	ROUND BRILLIANT
Measurements	9.18 - 9.25 X 5.75 MM

GRADING RESULTS

Carat Weight	3.03 CARATS
Color Grade	F
Clarity Grade	VS 1
Cut Grade	IDEAL

ADDITIONAL GRADING INFORMATION

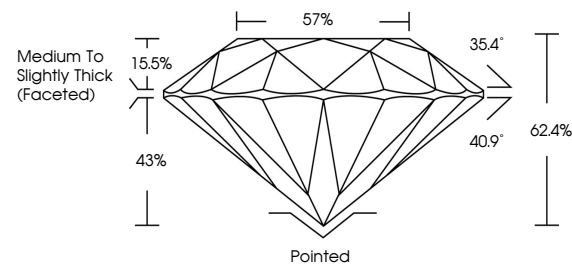
Polish	EXCELLENT
Symmetry	EXCELLENT
Fluorescence	NONE

Inscription(s) LABGROWN IGI LG539227804

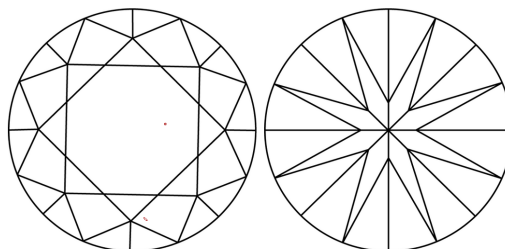
Comments: This Laboratory Grown Diamond was created by Chemical Vapor Deposition (CVD) growth process and may include post-growth treatment.
Type IIa

LG539227804

PROPORTIONS



CLARITY CHARACTERISTICS

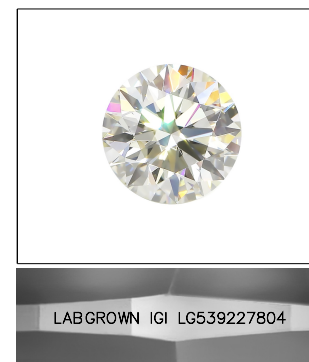


KEY TO SYMBOLS

Red symbols indicate internal characteristics.
Green symbols indicate external characteristics.

GRADING SCALES

COLOR GRADING SCALE	CL		NC		FT		VLT		LT	
	COLORLESS D-F		NEAR COLORLESS G-J		FAINT K-M		VERY LIGHT N-R		LIGHT S-Z	
CLARITY (10x) GRADING SCALE	FL IF		VVS		VS		SI		I	
	FLAWLESS INTERNALLY FLAWLESS		VERY VERY SLIGHTLY INCLUDED		VERY SLIGHTLY INCLUDED		SLIGHTLY INCLUDED		INCLUDED	

LASERSCRIBESM

Sample Image Used



© IGI 2020, International Gemological Institute

FD - 10 20

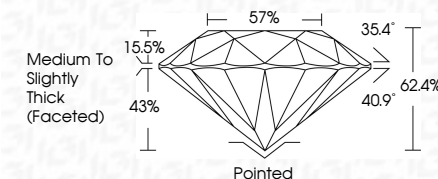
LABORATORY GROWN DIAMOND REPORT

August 1, 2022	
IGI Report Number	LG539227804
Description	LABORATORY GROWN DIAMOND

Shape and Cutting Style	ROUND BRILLIANT
Measurements	9.18 - 9.25 X 5.75 MM

GRADING RESULTS

Carat Weight	3.03 CARATS
Color Grade	F
Clarity Grade	VS 1
Cut Grade	IDEAL



ADDITIONAL GRADING INFORMATION

Polish	EXCELLENT
Symmetry	EXCELLENT
Fluorescence	NONE
Inscription(s)	LABGROWN IGI LG539227804

Inscription(s) LABGROWN IGI LG539227804

Comments: This Laboratory Grown Diamond was created by Chemical Vapor Deposition (CVD) growth process and may include post-growth treatment.
Type IIa



August 1, 2022	GL Report No. GSS9227804
ROUND BRILLIANT	18.18 - 19.25 X 5.75 MM
Color of Weight	Color Grade
Clarity Grade	Cut Grade
Depth	Table
Grade	Grade
Culet	Polish
Symmetry	Fluorescence
Inspection(s)	Inspection(s)
Comments:	This Laboratory Grown Diamond was created by Chemical Vapor Deposition (CVD) and may require post-growth treatment.
None	None

Comments: This Laboratory Grown Diamond was created by Chemical Vapor Deposition (CVD) growth process and may include post-growth treatment.