



ELECTRONIC COPY

LABORATORY GROWN DIAMOND REPORT

LABORATORY GROWN DIAMOND REPORT

LABORATORY GROWN DIAMOND REPORT

November 15, 2021

IGI Report Number **LG500147463**

Description	LABORATORY GROWN DIAMOND
-------------	-----------------------------

Shape and Cutting Style **PEAR BRILLIANT**

Measurements **9.10 X 5.79 X 3.50 MM**

GRADING RESULTS

Carat Weight 1.02 CARAT

Color Grade F

Clarity Grade VS 1

ADDITIONAL GRADING INFORMATION

Polish **EXCELLENT**

Symmetry **EXCELLENT**

Fluorescence **NONE**

Inscription(s)	LABGROWN IGI LG500147463
----------------	--------------------------

Comments: This Laboratory Grown Diamond was created by Chemical Vapor Deposition (CVD) growth process and may include post-growth treatment
Type IIa

PROPORTIONS

Thin To Slightly Thick (Faceted)

13%

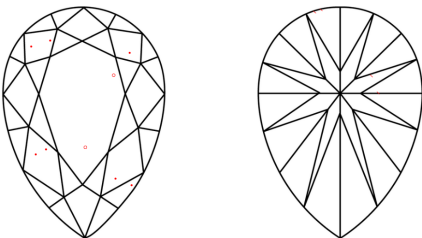
62%

44%

60.4%

Pointed

CLARITY CHARACTERISTICS

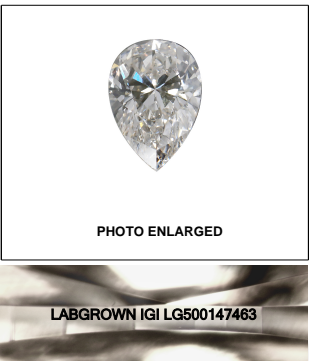
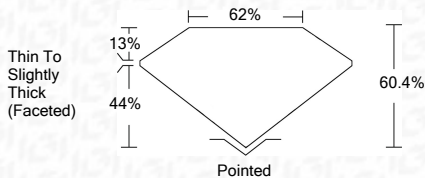
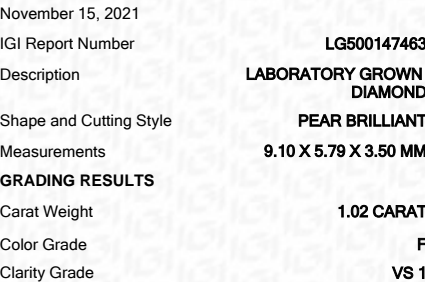


KEY TO SYMBOLS

Red symbols indicate internal characteristics.
Green symbols indicate external characteristics.

GRADING SCALES

COLOR GRADING SCALE	CL		NC		FT		VLT		LT	
	COLORLESS D-F		NEAR COLORLESS G-J		FAINT K-M		VERY LIGHT N-R		LIGHT S-Z	
CLARITY (10x) GRADING SCALE	FL IF		VVS		VS		SI		I	
	FLAWLESS INTERNALLY FLAWLESS		VERY VERY SLIGHTLY INCLUDED		VERY SLIGHTLY INCLUDED		SLIGHTLY INCLUDED		INCLUDED	

**LASERSCRIBESM**

ADDITIONAL GRADING INFORMATION

Polish **EXCELLENT**

Symmetry **EXCELLENT**

Fluorescence **NONE**

Inscription(s) **LABGROWN IGI LG500147463**

Comments: This Laboratory Grown Diamond was created by Chemical Vapor Deposition (CVD) growth process and may include post-growth treatment
Type IIa



IGI

[illegible]

This Laboratory Grown Diamond was created by Chemical Vapor Deposition (CVD) growth process and may include post-growth treatment
Type IIa

