



PROPORTIONS

Medium (Faceted)

57%

35.8°

40.7°

62.3%

43%

15.5%

Pointed

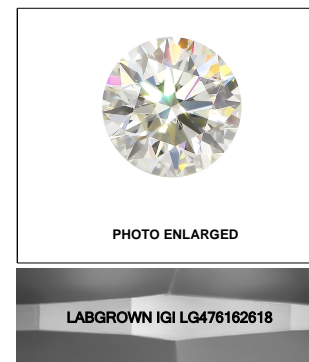
Red symbols indicate internal characteristics.
Green symbols indicate external characteristics.

ELECTRONIC COPY

LABORATORY GROWN
DIAMOND REPORT

GRADING SCALES

COLOR GRADING SCALE	CL		NC		FT		VLT		LT	
	COLORLESS D-F		NEAR COLORLESS G-J		FAINT K-M		VERY LIGHT N-R		LIGHT S-Z	
CLARITY (10x) GRADING SCALE	FL IF		VVS		VS		SI		I	
	FLAWLESS INTERNALLY FLAWLESS		VERY VERY SLIGHTLY INCLUDED		VERY SLIGHTLY INCLUDED		SLIGHTLY INCLUDED		INCLUDED	

**LASERSCRIBESM**

© IGI 2020, International Gemological Institute

FD - 10 20

www.igi.org

LABORATORY GROWN DIAMOND REPORT

06/01/2021

IGI Report Number

LG476162618

Shape and Cutting Style

ROUND BRILLIANT

Measurements

8.59 - 8.62 x 5.36 mm

GRADING RESULTS

Carat Weight

2.47 CARATS

Color Grade

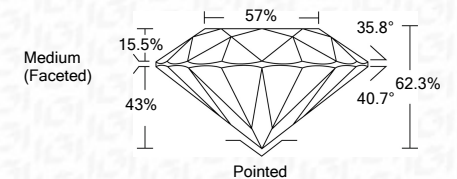
H

Clarity Grade

VS 1

Cut Grade

IDEAL



ADDITIONAL GRADING INFORMATION

Polish

EXCELLENT

Symmetry

EXCELLENT

Fluorescence

NONE

Inscription(s)

LABGROWN IGI LG476162618

Comments: This Laboratory Grown Diamond was created by Chemical Vapor Deposition (CVD) growth process and may include post-growth treatment
Type IIa



IGI

[illegible]